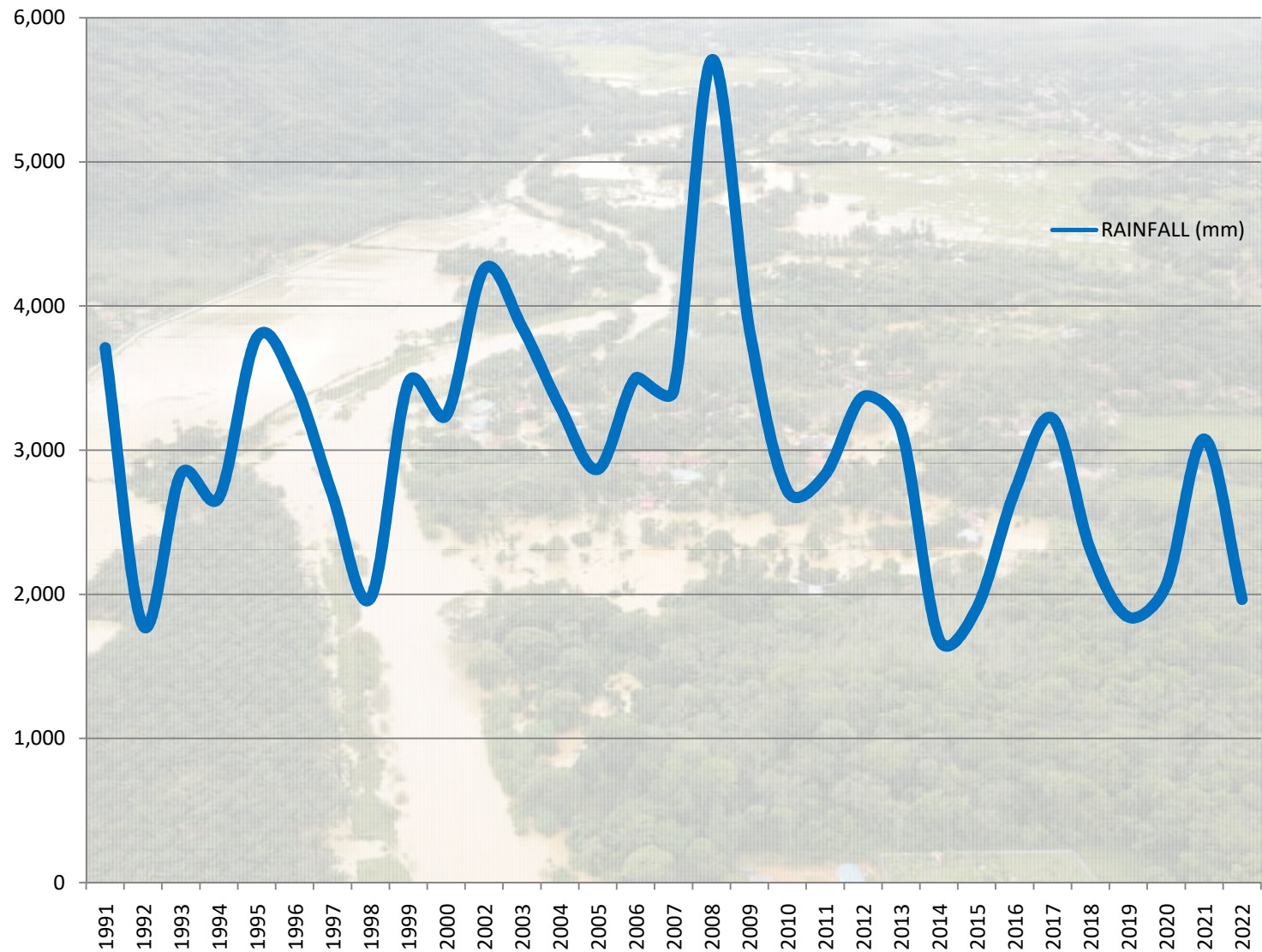
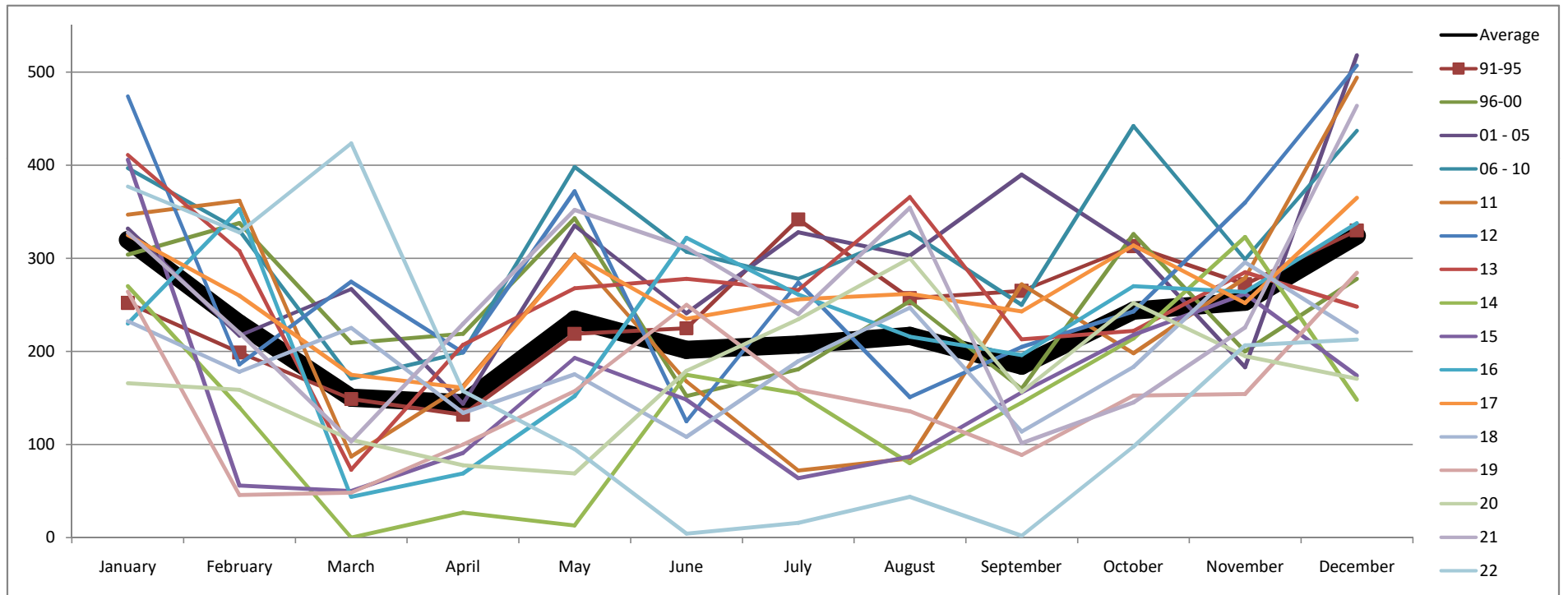


YEAR	RAINFALL (mm)
1991	3,710.0
1992	1,781.0
1993	2,836.0
1994	2,671.0
1995	3,781.0
1996	3,462.0
1997	2,684.0
1998	1,973.0
1999	3,468.0
2000	3,240.0
2002	4,256.0
2003	3,852.0
2004	3,301.0
2005	2,867.0
2006	3,501.0
2007	3,413.0
2008	5,707.0
2009	3,838.0
2010	2,718.0
2011	2,831.0
2012	3,371.0
2013	3,145.0
2014	1,690.0
2015	1,905.0
2016	2,715.0
2017	3,219.0
2018	2,303.9
2019	1,840.8
2020	2,065.1
2021	3,075.9
2022	1,964.19

ANNUAL RAINFALL 1991 - 2022 (DERAMAKOT FOREST RESERVE - FMU 19A)



	91-95	96-00	01 - 05	06 - 10	11	12	13	14	15	16	17	18	19	20	21	22	Average
January	252	304	332	397	347	474	411	270	406	230	325	232.5	264.1	165.8	327.8	377.2	319.7
February	199	338	217	330	362	186	308	140	56	353	260	178	45.8	158.9	220.1	327.8	230.0
March	149	209	267	171	87	275	73	0	50	44	175	225.3	48.3	105.1	103.6	423.4	150.4
April	132	219	144	199	163	199	207	27	91	69	161	133.9	100	77.8	229.8	157.4	144.4
May	219	343	335	398	304	372	268	13	193	152	303	175.4	157.3	69	352	94.9	234.3
June	225	152	241	307	168	125	278	175	148	322	235	108.3	250.1	179.3	311.58	4.2	201.8
July	342	181	328	278	72	274	266	155	64	261	256	189.6	159.2	234.6	240.2	16	207.3
August	257	254	303	328	85	151	366	80	87	216	262	247	135.8	300.2	354.2	43.8	216.9
September	265	160	390	250	272	205	213	145	156	196	243	113.9	88.7	156.5	101.4	2.2	184.9
October	313	326	312	442	198	243	222	214	218	270	314	183.4	152.5	252	145.4	97.8	243.9
November	272	200	183	299	279	360	285	323	262	264	252	295.8	154.4	195.1	225.9	206.69	253.6
December	330	278	518	437	494	507	248	148	174	338	365	220.8	284.6	170.8	463.9	212.8	324.4



	01 - 05	06 - 10	11	12	13	14	15	16	17	18	19	20	21	22	Average
January	332	397	347	474	411	270	406	230	325	232.5	264.1	165.8	327.8	377.2	325.7
February	217	330	362	186	308	140	56	353	260	178	45.8	158.9	220.1	327.8	224.5
March	267	171	87	275	73	0	50	44	175	225.3	48.3	105.1	103.6	423.4	146.3
April	144	199	163	199	207	27	91	69	161	133.9	100	77.8	229.8	157.4	139.9
May	335	398	304	372	268	13	193	152	303	175.4	157.3	69	352	94.9	227.6
June	241	307	168	125	278	175	148	322	235	108.3	250.1	179.3	311.58	4.2	203.7
July	328	278	72	274	266	155	64	261	256	189.6	159.2	234.6	240.2	16	199.5
August	303	328	85	151	366	80	87	216	262	247	135.8	300.2	354.2	43.8	211.4
September	390	250	272	205	213	145	156	196	243	113.9	88.7	156.5	101.4	2.2	180.9
October	312	442	198	243	222	214	218	270	314	183.4	152.5	252	145.4	97.8	233.2
November	183	299	279	360	285	323	262	264	252	295.8	154.4	195.1	225.9	206.69	256.1
December	518	437	494	507	248	148	174	338	365	220.8	284.6	170.8	463.9	212.8	327.3

